

# STREAM<sup>®</sup>

# RGB miniLED

U L T R A H D



**5 YEARS**  
WARRANTY  
Since 2007

 **Dolby**  
VISION IQ

 **Far  
Field**

**+90%**  
BT2020

**2000**  
nits

**144**  
Hz

 **Auto  
Brightness**

**miniLED**  
ULTRA HD 4K

**165**  
Hz

**STREAM** |  **Google TV**

**miniLED**  
ULTRA HD 4K



*Travel through a new universe*



**NETFLIX**  **YouTube**  **prime video**  **Hey Google**



**Chipset 6 in 1**

MODEL	RESOLUTION (type)	RESOLUTION (P)	REFRESH RATE (Hz)	SIZE (Pouce)	CONTRAST	BRIGHTNESS		
MQ55GTU144	ULTRA HD	3840 x 2160	144 Hz	55"	5000:1 (typ.)	650nits(Typ), 1400nits(Peak)	1 x 2.0 / 1 x 3.0	2 x 2.1 / 1 x 2.0
MQ75GTU165	ULTRA HD	3840 x 2160	165 Hz	75"	6000:1 (typ.)	650nits(Typ), 1400nits(Peak)	1 x 2.0 / 1 x 3.0	3 x 2.1
MQ85GTU144	ULTRA HD	3840 x 2160	144 Hz	85"	5600:1 (typ.)	550nits(typ), 13000nits(peak)	1 x 2.0 / 1 x 3.0	2 x 2.1 / 1 x 2.0

**5**  
**YEAR**  
WARRANTY  
Since 2007

















\*Product specifications featured in this catalog are subject to change without notice.

**STREAM**

**miniLED**  
ULTRA HD 4K

The STREAM 165Hz MiniLED TV is equipped with MEMC technology for smoother transitions and improved clarity during fast-action scenes. By analyzing frames and filling in gaps, MEMC technology reduces stuttering and motion blur, ensuring a more enjoyable viewing experience compared to TVs without it.

The STREAM 165Hz MiniLED TV is the perfect TV for gamers, delivering ultra-smooth gameplay thanks to its high refresh rate that minimizes motion blur. With 4K Ultra HD resolution and HDR technology, this TV offers vibrant colors and exceptional clarity.



**QD miniLED**

**165 Hz**

**Gaming TV**

**Dolby**  
VISION-ATMOS

**Far Field**

**1400 nits**

**MEMC**

**VRR**  
VARIABLE REFRESH RATE

**ALLM**  
auto low latency mode

**5**  
YEAR  
WARRANTY  
Since 2007

**STREAM**<sup>®</sup>

**miniLED**  
ULTRA HD 4K

**STREAM** | **Google TV**

**miniLED**  
ULTRA HD 4K

*Travel through a new universe*



**NETFLIX** **YouTube** **prime video** **Hey Google**

The Mini LED technology represents a significant advancement in display technology. It uses thousands of tiny LEDs to create a highly detailed backlighting system, resulting in superior brightness and contrast. Each Mini LED zone is individually controlled, allowing for precise dimming and enhanced local contrast. **Stream MINI-LED TVs** are equipped with **QUANTUM DOT (QD) TECHNOLOGY**. QUANTUM DOTS allow us to achieve deeper blacks and vivid color reproduction with incredible contrast and realism!

Offering more than  
**1.07 BILLION COLORS!**

**QUANTUM DOT**  
UP TO 1.07 BILLION COLORS

**FULL-ARRAY LED**  
UP TO 480 ZONES OF LOCAL DIMMING



**Far Field** **Frameless** **HDR10** **H.265 HEVC** **DVB-T2/C/S2** **Dolby AUDIO** **WiFi** **Google Cast**

MODEL	RESOLUTION (type)	RESOLUTION (P)	SIZE (Pouce)	CONTRAST	BRIGHTNESS	USB	HDMI
M55GT4K	Ultra HD	3840 x 2160	55"	1200 : 1	500 nits	2 x 2.0	3 x 2.1
M65GT4K	Ultra HD	3840 x 2160	65"	1200 : 1	500 nits	2 x 2.0	3 x 2.1

**5**  
**YEAR**  
WARRANTY  
Since 2007

\*Product specifications featured in this catalog are subject to change without notice.

STREAM®

whale tv



*Dive into a world of entertainment*



Frameless

HDR10  
HIGH DYNAMIC RANGE

H.265  
HEVC  
High Efficiency Video Coding

Dolby Vision/Atmos

Dolby  
VISION-ATMOS

WiFi

MODEL	RESOLUTION (type)	RESOLUTION (P)	SIZE (Pouce)	CONTRAST	BRIGHTNESS	USB	HDMI™
WhaleOS32	HD	1366 x 768	32"	3000:1	180 Nits	2 x 2.0	3 x 2.1

Whale TV makes entertainment smarter and simpler by bringing all your content—broadcast, streaming, and connected devices—together on one screen. With access to hundreds of apps like Netflix, Prime Video, and YouTube, plus free live and on-demand TV through Whale TV+, you'll never run out of things to watch. Its universal search and AI-powered recommendations help you quickly discover shows you'll love, while built-in voice control (or Alexa) makes it effortless to navigate. Constantly updated and designed for simplicity, Whale TV ensures a seamless and personalized viewing experience every time.

5  
YEAR  
WARRANTY  
Since 2007

NETFLIX

YouTube

prime video

whale tv+

STREAM

whale tv



Smart Home Integration



Free Streaming Hub



Wide Compatibility



Voice Assistant



App Ecosystem

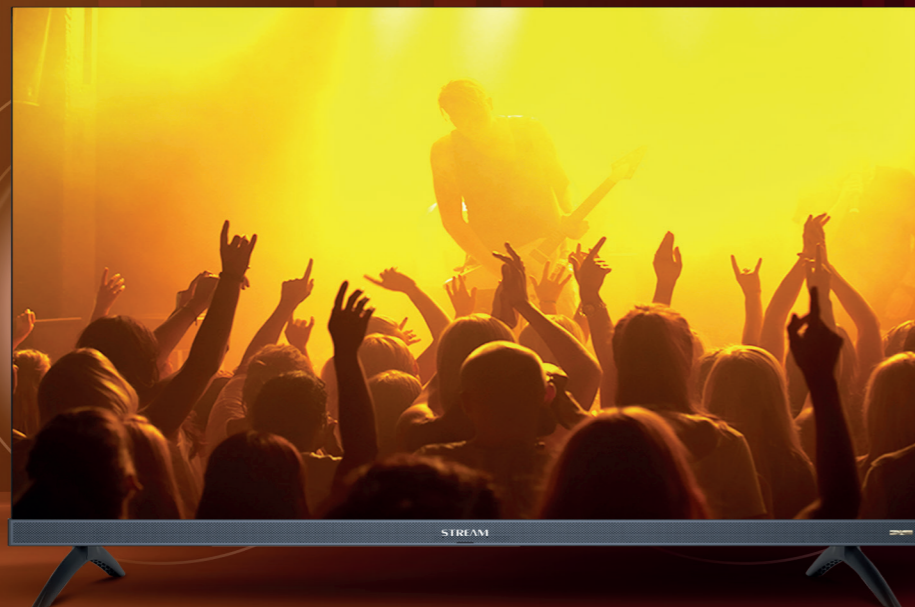
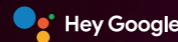


Feel all the excitement of live and on-demand sports with the DAZN app available on your Whale TV. Explore the best of sports right from the comfort of your living room. With Whale TV, enjoy a smooth, simple, and smart experience so you never miss a moment of your favorite competitions.

5  
YEAR  
WARRANTY  
Since 2007



*Unparalleled sound immersion*



MODEL	RESOLUTION (type)	RESOLUTION (P)	SIZE (Pouce)	CONTRAST	BRIGHTNESS	USB 3.1	HDMI™ (HIGH-SPEED MULTIMEDIA INTERFACE)
43GTFSPRO	FULL HD	1920 x 1080	43"	1200:1 (typ.)	260nits(Typ)	2 x 2.0	2 x 1.4
43GTUSPRO	ULTRA HD	3840 x 2160	43"	5000:1 (typ.)	365nits(Typ)	1 x 2.0 / 1 x 3.0	3 x 2.1
50GTUSPRO	ULTRA HD	3840 x 2160	50"	5000:1 (typ.)	350nits(Typ)	1 x 2.0 / 1 x 3.0	2 x 2.1 / 1 x 2.0
55GTUSPRO	ULTRA HD	3840 x 2160	55"	5000:1 (typ.)	350nits(Typ)	1 x 2.0 / 1 x 3.0	2 x 2.1 / 1 x 2.0
<b>Q50GTUSPRO</b> <b>QLED</b>	ULTRA HD	3840 x 2160	50"	5000:1 (typ.)	300nits(Typ)	1 x 2.0 / 1 x 3.0	2 x 2.1 / 1 x 2.0
<b>Q55GTUSPRO</b> <b>QLED</b>	ULTRA HD	3840 x 2160	55"	5000:1 (typ.)	320nits(Typ)	1 x 2.0 / 1 x 3.0	2 x 2.1 / 1 x 2.0
<b>Q65GTUSPRO</b> <b>QLED</b>	ULTRA HD	3840 x 2160	65"	5000:1 (typ.)	320nits(Typ)	1 x 2.0 / 1 x 3.0	2 x 2.1 / 1 x 2.0



Enjoy an exceptional sound experience with the Google TV SoundPro Series. Featuring Dolby Atmos technology, high-fidelity speakers, a subwoofer, and SOUNDPRO technology, it delivers immersive, clear, and powerful sound with deep bass, rich mids, and precise highs

\*Product specifications featured in this catalog are subject to change without notice.



Every scene is analyzed and optimized in real time by the powerful AI PQ processor, for exceptional image quality. Whether it's movies, sports, or video games, enjoy smooth, sharp, and perfectly balanced rendering.



DeepSeek AI offers real-time TV captioning with impressive accuracy. It also offers instant dialogue translation in multiple languages, making content accessible to everyone, everywhere.







*A TV personalized just for you*



-  **Far Field**
-  **Frameless**
-  **HDR10**  
HIGH DYNAMIC RANGE
-  **H.265 HEVC**  
High Efficiency Video Coding
-  **DVB-T2/C/S2**
-  **Dolby AUDIO**
-  **WiFi**
-  **Google Cast**

MODEL	RESOLUTION (type)	RESOLUTION (P)	SIZE (Pouce)	CONTRAST	BRIGHTNESS		
32GTH	HD	1366 x 769	32"	3000:1	200 Nits	1 x 2.0	2 x 1.4
40GTF	Full HD	1920 x 1080	40"	3000:1	220 Nits	2 x 2.0	2 x 1.4
43GTF	Full HD	1920 x 1080	43"	3000:1	220 Nits	1 x 2.0	2 x 1.4
43GTU	Ultra HD	3840 x 2160	43"	5000:1	280 Nits	1x2.0 / 1x3.0	3 x 2.0
50GTU	Ultra HD	3840 x 2160	50"	5000:1	330 Nits	1x2.0 / 1x3.0	3 x 2.0
58GTU	Ultra HD	3840 x 2160	58"	5000:1	320 Nits	1x2.0 / 1x3.0	3 x 2.0
65GTU	Ultra HD	3840 x 2160	65"	5000:1	400 Nits	1x2.0 / 1x3.0	3 x 2.0
70GTU	Ultra HD	3840 x 2160	70"	5000:1	350 Nits	1x2.0 / 1x3.0	2x2.1 / 1x2.0
75GTU	Ultra HD	3840 x 2160	75"	6000:1	350 Nits	1x2.0 / 1x3.0	2x2.1 / 1x2.0

**5**  
YEAR  
WARRANTY  
Since 2007



\*Product specifications featured in this catalog are subject to change without notice.

STREAM<sup>®</sup>

Google TV 5.0

android 14

Search options  
**assisted by AI**

Smoother control with  
**Google HOME**

A new interface  
**more customizable**

Energy consumption  
**optimal**

Advanced compatibility with  
**The latest technologies**



Take advantage of artificial intelligence  
with the new Google TV version

5  
YEAR  
WARRANTY

Since 2007

Gemini

## MORE OPTIONS, MORE FEATURES

# STREAM<sup>®</sup>

# DVB-T2/C/S2<sup>®</sup>

## DIGITAL VIDEO BROADCASTING

All STREAM TVs support **DVB-T2**, **DVB-C**, and **DVB-S2**.

offer a wide range of options and features, delivering a more immersive experience with more precise and detailed images across multiple platforms like Google TV, Android TV, and WebOS.



## Dolby AUDIO

### DOLBY DIGITAL PLUS

Enjoy immersive, vibrant, and high-quality sound. This DOLBY AUDIO PLUS guarantees consistently clear sound.

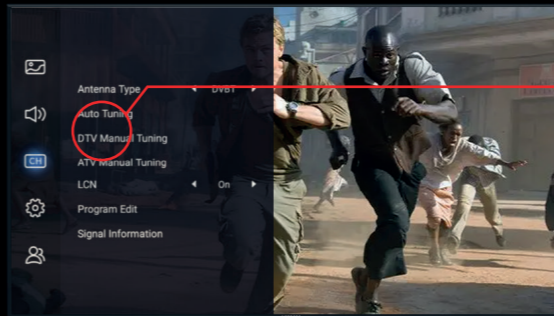
## H.265 HEVC

High Efficiency Video Coding

### HIGH EFFICIENCY VIDEO CODING

Video data compression at the same bitrate, delivering superior image quality and high color depth

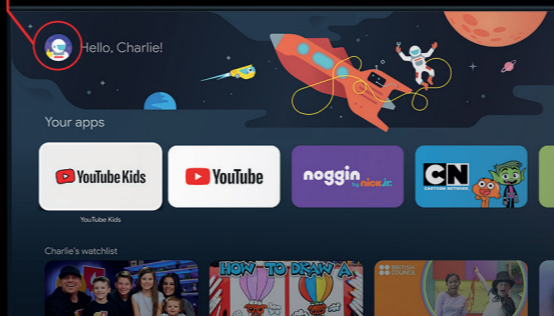
### FRAMELESS



### MULTIPLE USER PROFILES

You can create and customize multiple profiles, including one for children, while also having access to the advanced parental control feature that allows you to manage settings and control safe content.

\* This feature is only available on Google TV.



## DIGITAL SIGNAGE

Discover STREAM's **Digital Signage** functionality with auto-start that allows you to use your TV as a display.  
\*Available on Google TV



# 5 YEAR WARRANTY

Since 2007

**P** 2.0 Pro  
pure sound



Turn down the volume...

PureSound captures the true timbre and richness of every instrument and voice, allowing every nuance to be heard with crystal clarity.

With FarField technology, you no longer need a remote control to interact with your smart TV. Also called long-range voice recognition, it picks up your voice even from a distance. Simply speak to change channels, launch your content, or adjust the volume. A simple, seamless experience, completely redesigned for greater everyday comfort

\*This feature is available on S43GTU3-S50GTU3-S65GTU3.



# STREAM<sup>®</sup>

powered by WebOS Hub

*A magical experience*



MODEL	RESOLUTION (type)	RESOLUTION (P)	SIZE (Pouce)	CONTRAST	BRIGHTNESS	USB	HDMI	Sustainability Index
WSTRH32	HD	1366 x 768	32"	3000 : 1	180 Nits	2 x 2.0	3 x 1.4	6/10
WSTRF40	Full HD	1920 x 1080	40"	5000 : 1	230 Nits	2 x 2.0	3 x 1.4	6/10
WSTRF43	Full HD	1920 x 1080	43"	4000 : 1	250 Nits	2 x 2.0	3 x 1.4	6/10
WSTRU43	Ultra HD	3840 x 2160	43"	5000 : 1	230 Nits	2 x 2.0	3 x 2.0	-
WSTRU50	Ultra HD	3840 x 2160	50"	5000 : 1	260 Nits	2 x 2.0	3 x 2.0	6/10
WSTRU55	Ultra HD	3840 x 2160	55"	6000 : 1	240 Nits	2 x 2.0	3 x 2.0	6/10
WSTRU58	Ultra HD	3840 x 2160	58"	5000 : 1	300 Nits	2 x 2.0	3 x 2.0	-
WSTRU65	Ultra HD	3840 x 2160	65"	6000 : 1	275 Nits	2 x 2.0	3 x 2.0	-

**5**  
YEAR  
WARRANTY  
Since 2007



\*Product specifications featured in this catalog are subject to change without notice.

**STREAM**

**AIR MOUSE**

Air Mouse for super convenient Air Gestures.

**UNIVERSAL CONTROL**

Command different devices with one remote

**QUICK ACCESS**

Add Quick Shortcuts to your remote buttons..

**VOICE CONTROL**

Push to talk to interact with the TV

**POPULAR APPS**

The most popular applications.

**SCROLL**

For simple scrolling through.



powered by **webOS** Hub

**Magic Remote™**

With AirPlay and Apple Home, our webOS TVs let you easily stream content from your Apple devices and control all your connected devices from your screen. Turn your TV into the command center for your smart home.

**5**  
YEAR  
WARRANTY  
Since 2007



Control your home effortlessly with the **LG ThinQ** App, managing your **STREAM WEBOS TV** and other **ThinQ AI-compatible devices**, including direct control from your TV.



**5**  
YEAR  
WARRANTY  
Since 2007

powered by **webOS Hub**

**ThinQ AI**

**Magic Remote™**

Access all of STREAM's WebOS TV features through the ThinQ Ai dashboard on your TV.



# STREAM®

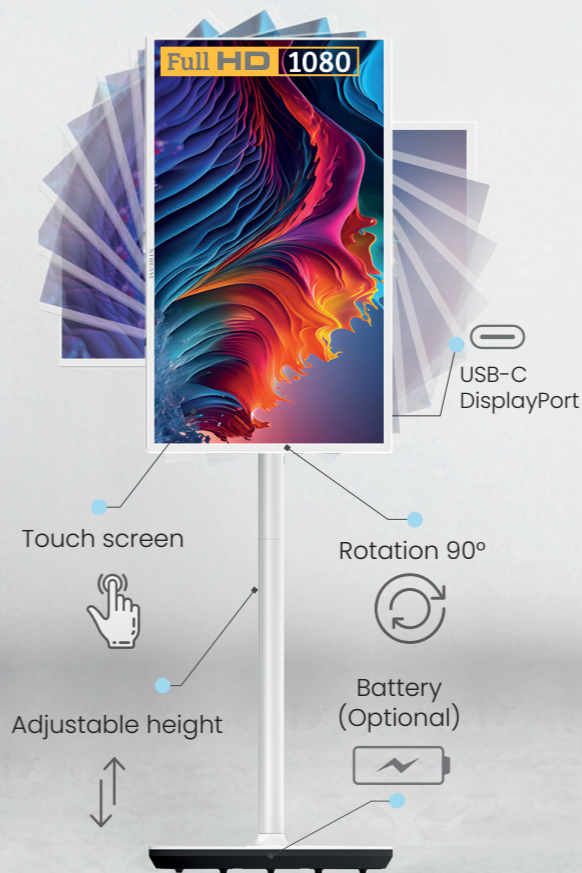
# ART TV



- Gallery Mode
- Screen with
- 37.9 mm Customizable Borders
- A Modern Frame Design
- Dolby Vision ATMOS
- Motion Sensor
- Premium Meeting Mode
- 1.07 billion colors

Discover Art TV by STREAM, where technology meets aesthetics. With its borderless artistic design, each screen unveils a world in 1.07 billion colors, projecting reality in beautiful 4K.

## 32ST-A SMART SCREEN



### ELECTRICAL PARAMETERS

CPU : Architecture : 2 x ARM Cortex-A72 @ 1,8 GHz / 4 x ARM Cortex-A53 @ 1,5 GHz	
RAM : 4GB	ROM : 16GB For the installation of applications
Bluetooth : 5.0	WIFI : Standard (802.11 a/b/g/n/ac)
Batterie 6000 mAh (More than 3 hours of autonomy)	Speakers : 2 x 8W

### SOFTWARE

Software version : Android 10.0

### WIRELESS SCREEN PROJECTION

Supported Projection Protocols : DLNA / Miracast / Airplay

### EXTERNAL PORT

HDMI2.0 : 1      USB-C : 1 / USB2.0 : 1 / USB3.0 : 1

### DISPLAY SETTINGS

Resolution : FHD (1920 x 1080)	Screen size 32 pouces	Screen type LCD LED
Brightness : 250cd/m <sup>2</sup> (Max)	Contrast ratio 1000:1	Screen ratio : 16:9
Refresh time : 8ms(Typ)	Number of frames : 60Hz	

### SUPPORT SETTINGS

Screen rotation : 90°	Forward / Backward tilt angle ± 20°
Left / Right tilt angle ± 45°	Vertical adjustment height 200 mm

### TYPE C FUNCTIONALITY

Type C supported features      Reverse fast charge (15W), DP Alt Mode



# DONGLE

STR-D2 G4K



<b>AV1</b>	Chromecast built-in
<b>AMLOGIC S905Y4</b>	<b>RJ45</b>
<b>Dolby AUDIO</b>	<b>4K Ultra HD</b>
<b>Wi-Fi 5</b>	<b>TYPE-C</b>
<b>HDMI™</b>	<b>Bluetooth™</b>

# STREAM®

# WE TAKE CARE OF ENVIRONNEMENT



 **BOMARE COMPANY is certified for using recyclable materials.**

**12 MONTH WARRANTY**

**5 YEAR WARRANTY**  
Since 2007

# STREAM<sup>®</sup>



📍 Head office : 08 Ben Aknoun Road, El Biar - Algiers.  
☎ Phone : +213 (0) 28 05 36 39 ✉ sarlbomare@streamsystem.net  
🌐 [www.streamsystem.com](http://www.streamsystem.com)      stream system