

Manufacturing  
and industrial  
subcontracting  
activity



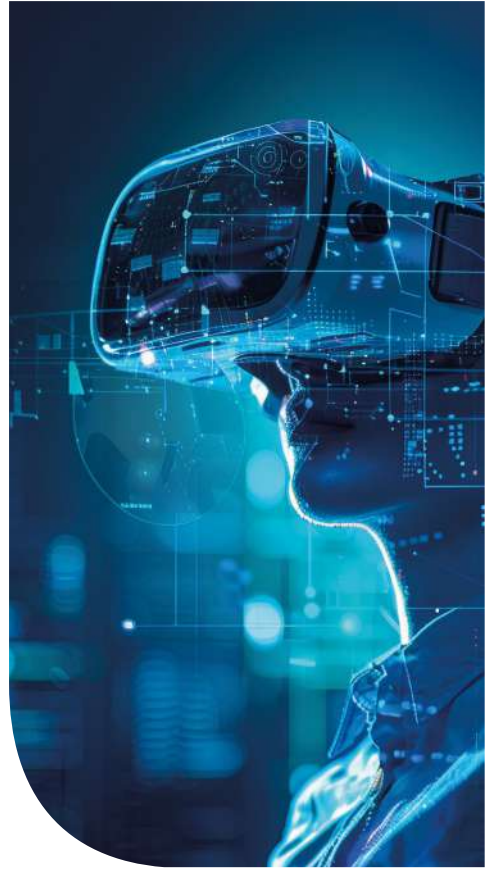
Exportation



Enterprises  
solutions



After-sales  
services



**bomare**  
company



# Anniversary



<b>OUR COMPANY</b>	<b>P5</b>
<b>OUR NEW VISUAL IDENTITY</b>	<b>P6</b>
<b>OUR NEW HEADQUARTERS</b>	<b>P6</b>
<b>OUR NEW FACTORY</b>	<b>P7</b>
<b>NEW FACTORY KEY NUMBERS</b>	<b>P9</b>
<b>OUR BRAND NAME</b>	<b>P10</b>
<b>OUR FIELDS OF ACTIVITY</b>	<b>P11</b>
<b>KEY NUMBERS</b>	<b>P12</b>
<b>OUR VALUES AND PRINCIPLES</b>	<b>P14</b>
<b>OUR QUALITY POLICY</b>	<b>P15</b>
<b>OUR CERTIFICATES</b>	<b>P16</b>
<b>OUR DISTINCTIONS</b>	<b>P16</b>
<b>A SUSTAINABLE COMMITMENT</b>	<b>P18</b>
<b>A GREAT PLACE TO WORK</b>	<b>P18</b>
<b>THE EXPORT CHALLENGE</b>	<b>P19</b>
<b>BOMARE TECHNOLOGY CORPORATION</b>	<b>P22</b>
<b>A COMPANY COMMITTED TO TRAINING, EDUCATION, AND STAFF MENTORING</b>	<b>P23</b>
<b>OUR ASSETS</b>	<b>P24</b>
<b>BOMARE COMPANY'S PARTNERS</b>	<b>P31</b>
<b>HISTORICAL OVERVIEW</b>	<b>P32</b>

“ The path to success is not easy; it requires determination, hard work, and a long-term vision.. ”



Founder and General Manager of  
**BOMARE COMPANY**  
**Ali BOUMEDIENE,**

BOMARE COMPANY was founded in 2001 by Mr. Ali Boumediene, who dedicated his vision and efforts to establishing it as a recognized leader in the electronics industry.

The company has undergone a significant increase in its share capital, bringing it to DA 3,200,000,000. This capital increase reflects the company's continued growth and development, as well as its strong market position.

BOMARE COMPANY aims to consolidate its position as a reference in the electronics industry and to strengthen its strategic presence in European and African markets.



# 3,200,000,000 DZD

By increasing its capital, shareholders demonstrate their confidence in BOMARE COMPANY's future and their commitment to its growth. This development reinforces the company's standing as a key player in the Algerian economy, contributing to job creation and the country's overall development.

BOMARE COMPANY remains committed to innovation and to providing high-quality products and services to its customers, while actively contributing to the socio-economic development of Algeria.



## OUR NEW VISUAL IDENTITY

As part of its continued evolution, BOMARE COMPANY has adopted a new visual identity, including a redesigned logo. This change reflects the company's ambition to modernize its image while remaining faithful to its core values: innovation, quality, and excellence.

BOMARE COMPANY has also inaugurated its new headquarters in the heart of El Biar, covering an area of 1,200 sqm.

This new identity embodies the company's forward-looking vision and marks a new chapter in its development.



## OUR NEW HEADQUARTERS



BOMARE COMPANY has inaugurated its new headquarters in the heart of El Biar, with a surface area of 1,200 sqm. This modern and functional facility has been designed to foster organizational agility, enhance team collaboration, and enable swift decision-making.

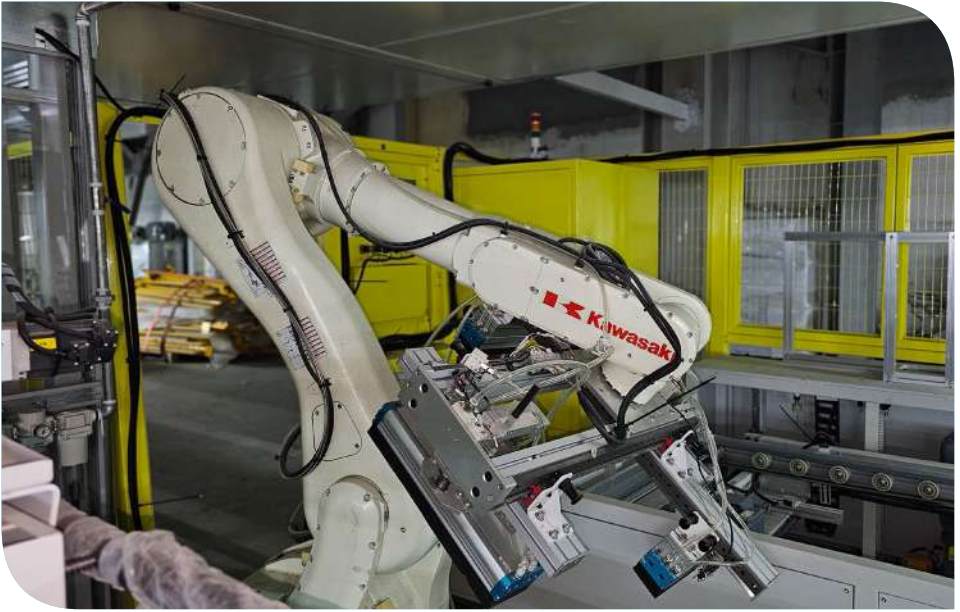
Located near major economic hubs, this new headquarters reflects our commitment to sustainable growth and strengthens our presence in close proximity to our partners and decision-making centers.

## OUR NEW FACTORY

BOMARE COMPANY marks a significant milestone in its industrial development with the opening of a brand-new factory in Blida. Equipped with next-generation assembly lines, this facility significantly enhances our production capacity. It reflects our continued commitment to innovation, quality, and local job creation, while meeting the highest international standards.

With an annual production capacity of 3 million units, the facility meets growing demand both nationally and internationally. The production line is optimized for screen sizes ranging from 32 to 85 inches and incorporates highly automated operations to ensure consistent quality and maximum efficiency.





The factory is spread across three levels, each dedicated to a specific phase of assembly, quality assurance, and precision testing. Notable features include:

Three display panel assembly lines, ensuring flexibility and high output.  
A Class 1000 clean room, designed for the integration of sensitive components in a controlled environment, and prepared to accommodate specialized equipment.

A work area of 50,000 sqm.  
This new factory reflects BOMARE COMPANY's commitment to industrial innovation, operational excellence, and sustainable growth, while contributing actively to the local economy.

# NEW FACTORY KEY NUMBERS

1

Production capacity

**3 millions of screens  
produced per year**

**50,000 sqm** of infrastructure dedicated  
to production and storage activities

2

Human resources

**1,800 employees**

**Launch of BOMARE ACADEMY**  
With the integration of 150  
apprentices in different specialties.

3

Target turnover

**300 million USD**

4

Value of exports

**250 million USD**

85%

**Export rate**

production intended for  
Europe and Africa

60%

**Integration rate**

In maturity phase

## Industrial optimization

- The most competitive production costs in Africa and Europe, combined with strict compliance with international standards.

## Industrial ecosystem

Collaboration with more than 25 specialized partners and trades.

Local value chain:  
hardware and  
accessories.

Software: Innovation & Technology:  
Development of artificial intelligence solutions,  
Partnerships with startups in R&D.

**STREAM**<sup>®</sup>

**5 YEARS**  
WARRANTY  
Since 2007

# STREAM<sup>®</sup>

The electronic products manufactured by BOMARE COMPANY are marketed under the STREAM trademark, which was registered in 2003.



**IT products**



**TELEVISIONS**



**CAMERAS**

DIGITAL  
INTERACTIVE  
DISPLAYS **DID**



**VIDEO  
WALL**

**INTERACTIVE  
WHITEBOARD**



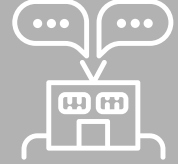
\*All our IT products are certified by the ARPCE, confirming their compliance with Algerian regulations and standards.



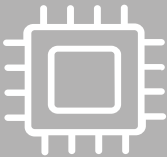
Consumer electronics products (EMS\*, OEM\*, OBM\*).



Digital interactive displays and cameras, solutions for B2B (Hardware and Software).



Industrial subcontracting activity.



Electronic Manufacturing Services  
Original Equipment Manufacturer  
Original Brand Manufacturer




After-sales services.

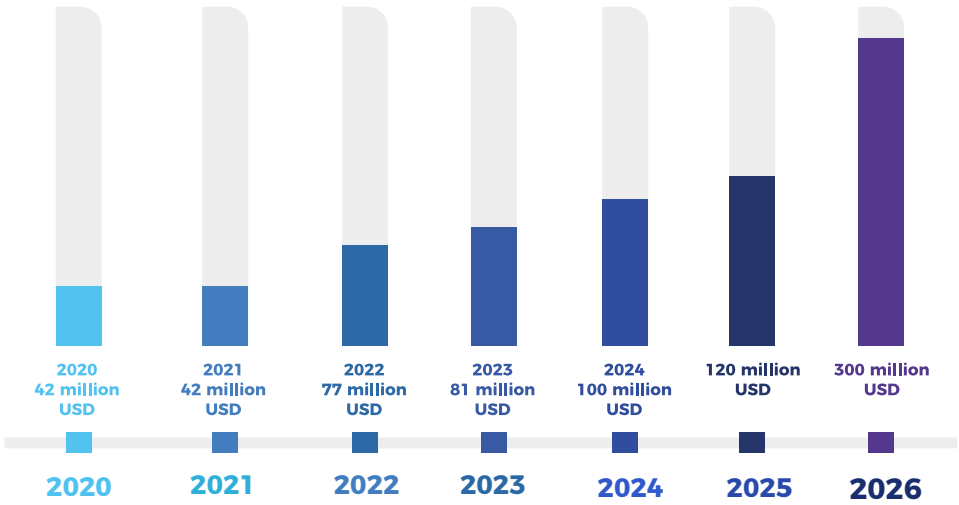


Applications and platforms Development

\* EMS : Electronic Manufacturing Services  
\* OEM : Original Equipment Manufacturer  
\* OBM : Original Brand Manufacturer

**1** Turnover  
\*\*300 million USD 

**2** Employees  
\*1800 



**BOMARE COMPANY'S TURNOVER EVOLUTION SINCE 2020**

**3** Production site  
02 

**4** Total plant area  
50 000 sqm 

\*by 2028

\*\* Estimated

5

## Distribution units

BOMARE COMPANY owns distribution platforms (Center, East, West and South of Algeria)



6

AFTER-SALES SERVICES    Registered agents  
(13 + 68)



7

## GLOBAL EXPANSION



- Spain
- Portugal
- Italy
- Germany
- Netherlands
- France
- South Africa
- Gabon

**Our products are available throughout Europe via Amazon.**

8

INTERNATIONAL  
AFTER-SALES SERVICES  
"5 YEARS WARRANTY"\*

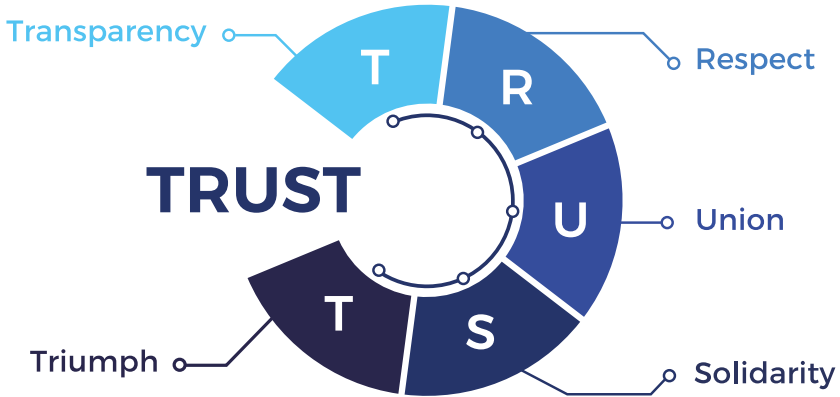


- Spain
- Portugal
- Italy
- Germany *(in development)*



## OUR VALUES AND PRINCIPLES

BOMARE COMPANY's culture is built around the value of "TRUST". It is expressed through a set of core values that form the foundation of the company's unique identity, namely:



These core values are the foundation of how BOMARE COMPANY operates and conducts its business through the following 6 main fundamental principles.



### OUR FUNDAMENTAL PRINCIPLES

- 1 The customer remains the priority ;
- 2 Customer's satisfaction is the main objective ;
- 3 Men and women make the value of the company ;
- 4 Quality is the motto ;
- 5 Innovation is the key to success ;
- 6 Challenges are the driving force of the company.

# OUR QUALITY POLICY

Since its establishment in 2001, Bomare Company has imposed itself as an Algerian benchmark in the electronics, electrical, and IT industries, and the knowledge economy. This position is the result of a policy primarily focused on continuous improvement and the satisfaction of our customers and stakeholders. This vision is supported by providing innovative, reliable, and high-quality products to both national and international markets, particularly the demanding European market, accompanied by responsive and professional after-sales service. We provide a 5-year warranty on the products of our registered brand, "Stream."



## OUR VALUES

- Innovation and investment.
- Commitment to production and the development of local capabilities.
- The customer is our top priority.
- Excellence and competitiveness through a strong presence in national and international markets.

## OUR STRATEGIC PILLARS

1

Customer loyalty, satisfaction of stakeholders, and obtaining the IANOR "Fi Khidmatikom" label for customer reception.

2

Build customer loyalty and satisfy internal and external stakeholders.

Development of human capital and the culture of occupational health and safety within the company.

3

Strengthening the presence of the "Stream" brand locally and internationally, and ensuring strategic communication.

4

Diversification of activities and reinforcement of technical excellence.

5

Maintaining and developing the presence of the "Stream" brand, and ensuring optimal communication.

## OUR CERTIFICATES



**CE certification**  
Product complies with EU standards for health, safety, and environmental protection.



**RoHS**  
Restriction of the use of certain hazardous substances.



**ISO 9001 version 2015 :**  
Quality management.



**ISO/IEC 17025 version 2017 :**  
The Algerian Accreditation Organization.



**BOMARE COMPANY**  
is certified for using recyclable materials.

**Label Fi Khidmatikoum”**

BOMARE COMPANY was awarded “Label Fi Khidmatikoum” by IANOR for customer service in 2025.

**ISO 14001 version 2015 :**

**Environmental management (In process)**

**ISO 45001 version 2018 : Workplace health and safety management (In process)**

## OUR DISTINCTIONS



**Export trophy encouragement 2015** awarded by WTC Algeria.



**London**  
Stock Exchange

Inspiring and fast growing company on the African market for 2018 by London Stock Exchange Group (LSEG). Classification among the best performing African companies in 2019 by London Stock Exchange Group (LSEG).



« Best Exporter Trophy 2019».  
BOMARE COMPANY was awarded by WTC Algeria as The Best Exporter of the year 2019.



«Best Algerian Entrepreneur Trophy 2021»  
Mr. Ali BOUMEDIENE elected best Algerian entrepreneur by EUROPEAN CEO Magazine.



"Label Ikhtyari"

STREAM was awarded "Label Ikhtyari" in 2022 for its WebOS TV series.

## The General Management of Boumar Company is committed to the following :

- Providing the human, technical, and financial resources necessary to achieve its strategic objectives.
- Complying with all applicable national and international legal and regulatory requirements related to import and export activities.
- Taking into account climate change and its potential impacts on operations.
- Ensuring a healthy, safe, and respectful working environment, while safeguarding the physical and psychological well-being of employees.
- Aligning with the Algerian government's vision for digital transformation, with the aim of optimizing time, costs, and efforts.
- Promoting and embedding a culture of quality, innovation, health, safety, and customer care throughout the organization.
- Ensuring the protection of personal data of employees, customers, and partners in accordance with applicable legislation.
- Complying with the requirements of the Algerian Institute for Standardization (IANOR) and relevant standards, including ISO 9001:2015, ISO 45001:2018, and ISO 17025:2017.
- Adopting a systematic approach based on the assessment of strengths and weaknesses, as well as the analysis of risks and opportunities.
- Ensuring the reliability, impartiality, and confidentiality of laboratory measurement personnel competency results.
- Optimizing operational costs to ensure sustainable profitability while maintaining high quality standards.
- Continuously improving this policy to meet the expectations of customers and all interested parties.



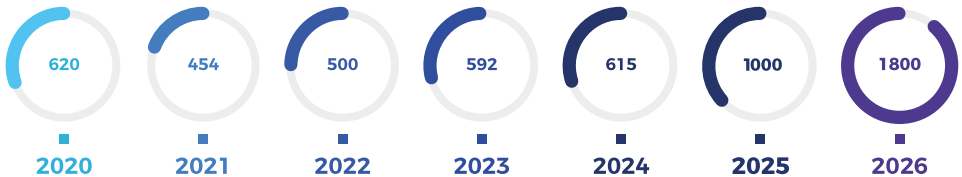
## A SUSTAINABLE COMMITMENT



Although BOMARE COMPANY actively supports technological progress, it remains firmly committed to environmental protection. This commitment has guided the company since 2006, when it adopted the RoHS directive, aimed at restricting the use of hazardous substances. In line with its environmental policy, BOMARE COMPANY consistently favors technologies and processes that are respectful of the environment.

## A GREAT PLACE TO WORK

### EVOLUTION OF THE NUMBER OF EMPLOYEES OF BOMARE COMPANY SINCE 2020



- The success of BOMARE COMPANY is the result of the devotion, sincere commitment and passion of its 905 employees.
- The undeniable asset of BOMARE COMPANY is its young, dynamic, well-educated and qualified human capital.
- BOMARE COMPANY strongly supports gender equality at work.
- A pleasant work environment is a key priority at BOMARE COMPANY.



### BOMARE COMPANY, FIRST ALGERIAN EXPORTER OF ELECTRONIC PRODUCTS TO EUROPE.

- At BOMARE COMPANY, export is at the core of our strategic development. It reflects not only our ambition to grow beyond borders but also our commitment to positioning Algerian innovation in the electronic field on the global stage. In fact, we aim to become a regional hub for electronics innovation and production, offering competitive alternatives to Asian manufacturers, backed by : **a strong engineering culture, regulatory reliability, and cost advantages.**
- Located just 20 km from the Port of Algiers, our two industrial units cover 50,000 sqm and house some of the region's most advanced manufacturing technologies.
- Our production capacity reaches 3 million units, allowing us to rapidly meet growing demand while maintaining world-class quality and reliability.

#### Export at the Heart of Our Strategy :

- Since our earliest steps into international trade, export has been a key driver of our expansion and long-term vision. We view international markets as both an opportunity and a challenge to deliver high-quality technology while strengthening Algeria's presence in global supply chains. For BOMARE COMPANY, going global is not a choice, it's a strategic mission.



## OUR COMPETITIVE ADVANTAGES

- **Proximity to both Europe and Africa :** Providing quick access to international markets ;
- **Cost efficiency :** Labor and energy costs significantly lower than in Europe ;
- **Advanced automation :** Including robotic handlers, automated packaging, and 2,400 sqm of cleanroom space (Class 10K, 1K) ;
- **Scalability and Customization :** From prototyping to mass production ;
- **After-Sales Commitment :** Rollout of a dedicated service hub in Germany by 2027.

#### Full EMS (Electronics Manufacturing Services) Offering:

We also provide full OEM and ODM services, supported by an in-house R&D center and our ISO/IEC 17025-certified Calibration & Certification Laboratory, ensuring products meet international technical and compliance standard.

### As follows :

- Automatic insertion of all types of electronic boards ;
- Reverse engineering for obsolete components ;
- Industrial electronic board repair ;
- PCB design for LED lighting and industrial use ;
- Test bench development ;
- System automation ;

### A Strategic Focus on International Growth :

- As a pioneer in the Algerian electronics industry, BOMARE COMPANY proudly holds the distinction of being the first Algerian company to export electronic products to Europe.
- Since 2007, BOMARE COMPANY has steadily expanded its footprint across European markets, with a bold vision of establishing a truly global presence.



- Driven by innovation and excellence, BOMARE COMPANY actively participates in major international trade fairs to showcase its technological capabilities. Notably, the company has been a consistent exhibitor at IFA Messe Berlin ; one of the world's most prestigious consumer electronics fairs, since 2011. Each year, BOMARE COMPANY highlights its latest innovations and affirms its commitment to quality and progress.

### Key Milestones in Export Development :

- |      |  |
|------|--|
| 2007 | ● First export to Spain, despite a restrictive trade climate ;   |
| 2016 | ● USD 50 million contract with a Spanish distributor for Spain and Portugal ;                                    |
| 2017 | ● Expansion into Africa : Exports to South Africa and USD 4 million/ year agreement with Gabon ;                 |
| 2019 | ● Entry into Italy, with products in 2,000+ retail stores (COOP, ESSELUNGA, FAMILA, CARREFOUR) ;                 |
|      | ● Invited to CARREFOUR TECH; trained 120 product managers  |
| 2020 | ● « Best Exporter Trophy 2019». BOMARE COMPANY was awarded by WTC Algeria as The Best Exporter of the year 2019. |

2024

- Amazon Distribution : Products now sold via Amazon in [Spain](#), [Portugal](#), [Italy](#), [Germany](#), [France](#), [Belgium](#), [the Netherlands](#), [Poland](#), and [Sweden](#).

### Vision for Europe and Africa :

- **Europe** : Based in Algeria, we are a strategic partner for European OEMs, ODMs, and distributors, offering [proximity](#), [fast manufacturing](#), and [certified quality](#). Our expansion into Germany is underway, with active contract negotiations and plans to launch a local after-sales service center by 2026, including a 5-years warranty. Thanks to our omnichannel model, including [Amazon](#), our products are already widely available across Western and Northern Europe. Moreover, under the Algeria-EU Bilateral Agreements, our customers benefit from zero import duties via the [EUR1 Certificate](#), providing a strong cost advantage for exports to Europe.
- **Africa** : As demand for electronics continues to grow across the continent, BOMARE COMPANY is capitalizing on its [strong production capacity](#) and strategic regional presence to deliver reliable, affordable solutions tailored to local markets. Our established operations in South Africa and Gabon lay the foundation for broader regional expansion.

With the implementation of the AfCFTA agreement, we now have access to 54 African countries, opening up significant opportunities for pan-African growth and integration.

### Why Choose BOMARE COMPANY as Your Partner ?

- Reliable, certified quality ;
- Fast, scalable production ;
- Cost advantage vs. EU/Asia ;
- Strong logistics and port access ;
- Strategic focus on after-sales support.

### We will be participating at IFA 2026

**Exhibit at  
IFA 2026.**





**BOMARE  
TECHNOLOGY CORPORATION**

Mr. Ali BOUMEDIENE, the Executive Manager of BOMARE COMPANY, has signed a landmark contract marking the beginning of a new era for the company. This agreement opens up promising prospects for Algeria's technological advancement.

The primary objective of SARL BOMARE TECHNOLOGY CORPORATION is to develop innovative products in Algeria, relying on local expertise. The initiative aims to create solutions tailored to the specific needs of both Algerian and international markets.

Through this strategic collaboration, Algeria will gain access to a broader base of technological knowledge, enhancing its position on the global stage.

The BOMARE technology corporation logo, with 'bomare' in a bold, lowercase sans-serif font and 'technology corporation' in a smaller, lowercase sans-serif font below it. The background of the entire page is a dark blue, futuristic digital landscape with a glowing white and blue human head in profile, overlaid with various data visualizations like charts, graphs, and code snippets.

**bomare**  
technology corporation

**First step towards  
Algeria's technological  
independence.**



## A COMPANY COMMITTED TO TRAINING, EDUCATION, AND STAFF MENTORING



«BOMARE ACADEMY» to promote and support professional training.



Training of 410 young graduates since November 2008.



Signing of more than 150 professional integration contracts.



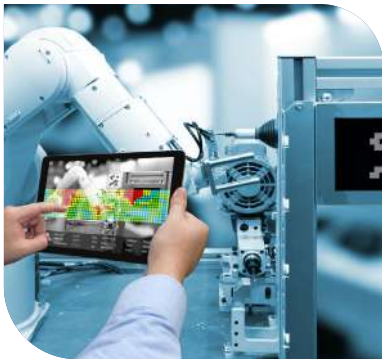
The signing of partnership agreements with different universities and R&D centers, such as :

- University of Science and Technology - Houari Boumediene (USTHB - Bab Ezzouar)
- BOMARE COMPANY signed a USD \$1.5 million agreement with its partner, UNIVERSAL INSTRUMENTS, to supply “Saad Dahlab” University with an SMT production line. This agreement led to the creation of a professional Master’s program titled “Automatique Appliqué,” now part of the newly established.
- Department of Automatic and Electrical Engineering. BOMARE COMPANY handled the entire logistics of the project, including transport of the line, customs clearance, installation, commissioning, and maintenance.
- The creation of this Professional Master’s program is the outcome of a long-term collaboration initiated by the 2016 agreement between the two partners.
- Mouloud Mammeri University (Tizi-Ouzou),
- National Polytechnic School (Algiers & Oran),
- National School of Computer Science (Oued Smar),
- Center for Development of Advanced Technologies (CDAT),
- National School of Artificial Intelligence (ENSIA).



## THE PRODUCTION SITE

BOMARE COMPANY operates a factory located in Birtouta, Algiers, extending over 15 000 sqm, including 5500 sqm of built-up area and 10 750 sqm for the new factory. The original site comprises three production units.



### 1 - SMT PRODUCTION UNIT

In terms of equipment, BOMARE COMPANY remains among the industry leaders. The company is equipped with advanced machinery capable of producing all types of MPCBs for various sectors, including broadcasting, telecommunications, medical equipment, mobile phones, computers, and more. The SMT production unit includes two high-volume SMT lines equipped with line manager and full traceability modules.



## THE SMT PRODUCTION UNIT IS COMPOSED OF DIFFERENT PRODUCTION LINES

1

2 high speed/high volume SMT lines composed of «UNIVERSAL INSTRUMENTS» insertion machines with 450000 CPH and capable of inserting components from 01005 Min to 30 x 30 x 6 Max and professional quality control equipment "AOI and 3D SPI from «SAKI»".

2

2 function test lines.

3

One manual insertion line (DIP) with wave soldering process.

4

The acquisition of an X-ray inspection machine is being finalized.

## 2 - TV ASSEMBLY UNIT

Three assembly lines for TVs from 32 inches to 100 inches and different technologies (LED, miniLED, QLED...)



### RESEARCH AND DEVELOPMENT DEPARTMENT

The Research and Development structure of BOMARE COMPANY is the core of the company.

All of BOMARE COMPANY's activities and projects rely on this multifunctional structure, which provides operational management and technical support. It also oversees the implementation of all operational programs, with a particular focus on internal training and research and development.

This structure also works closely with numerous national and international advanced research institutions. This enables BOMARE COMPANY to identify emerging trends and transform them into future activities.

In addition, BOMARE COMPANY is actively involved in national standardization. It has been a permanent member for several years of four technical committees of IANOR (the Algerian Institute of Standardization), which are responsible for studying and adopting international standards.



### INDUSTRIAL PROJECTS DEPARTMENT

BOMARE COMPANY's Industrial Projects Department was created in 2018 to meet the growing demand from local customers wishing to develop or produce their own electronic main boards and to maximize the integration rate of its manufactured products.

The Industrial Projects Department plays an important role in bringing new solutions to the Production Department, in order to optimize and automate the various production lines, increase productivity, and reduce non-conformities to reach zero defects.

The future objective of the industrial projects department is to develop new products owned by BOMARE COMPANY.



## QUALITY INSURANCE DEPARTMENT

BOMARE COMPANY prioritizes the satisfaction of its partners, distributors, and customers by committing to reliable, high-quality service.

In this context, the Quality Insurance Department has implemented an insurance plan covering all activities related to product compliance and customer satisfaction ; it operate in three levels :



The compliance rate is checked daily, in addition to regular and extraordinary brainstorming meetings which are held to analyze non-conformities and initiate corrective and preventive actions.

The quality insurance department of BOMARE COMPANY is equipped with a “dark room”, 2 aging rooms, High-Tech and High Precision test and measurement equipment to ensure the best products quality. From receiving the various electronic components to the final product, each process is under control to meet standards and customer’s satisfaction.



## **ENVIRONMENT, HYGIENE AND SAFETY DEPARTMENT (EHS)**

BOMARE COMPANY attaches great importance to environmental protection and workplace safety.

In order to conduct its operations, both within and outside its facilities, in a socially responsible, ethical, and sustainable manner, BOMARE COMPANY is committed to:

Providing a healthy and safe working environment for employees, customers, and anyone visiting and/or working on its sites.

Protecting the environment and reducing greenhouse gas and carbon emissions in its products and processes.

To implement this policy, BOMARE COMPANY has aligned its EHS requirements with the requirements related to product development and operational activities.



## **THE FIRST LCD REPAIR CENTER IN AFRICA AND THE MIDDLE EAST**

For the first time in Africa and the Middle East, BOMARE COMPANY created its LCD Repair center dedicated to the repair of all types of TV screens (Plasma, LCD, LED, miniLED).

The LCD Repair center has an ISO5 clean room for Polarizers and COF replacement in compliance with international standards and manufacturers' requirements. It also includes a repair area for electronic parts such as T-CON Boards and inverters.

BOMARE COMPANY has recruited the highly qualified electronics engineers with extensive training in South Korean.

The LCD Repair Center is capable of providing the following repairs :

**1**

Polarizer replacement for physical damage and scratches.

**2**

COF replacement for defects such as horizontal or vertical lines and bands.

**3**

Backlight Unit repair.

**4**

Repair of electronic components, such as T-CON boards, for display defects.

BOMARE COMPANY is the only company in Algeria to offer an exclusive 5-year warranty on its STREAM TVs, both locally and internationally.



## A CALIBRATION LABORATORY FOR MEASURING INSTRUMENTS



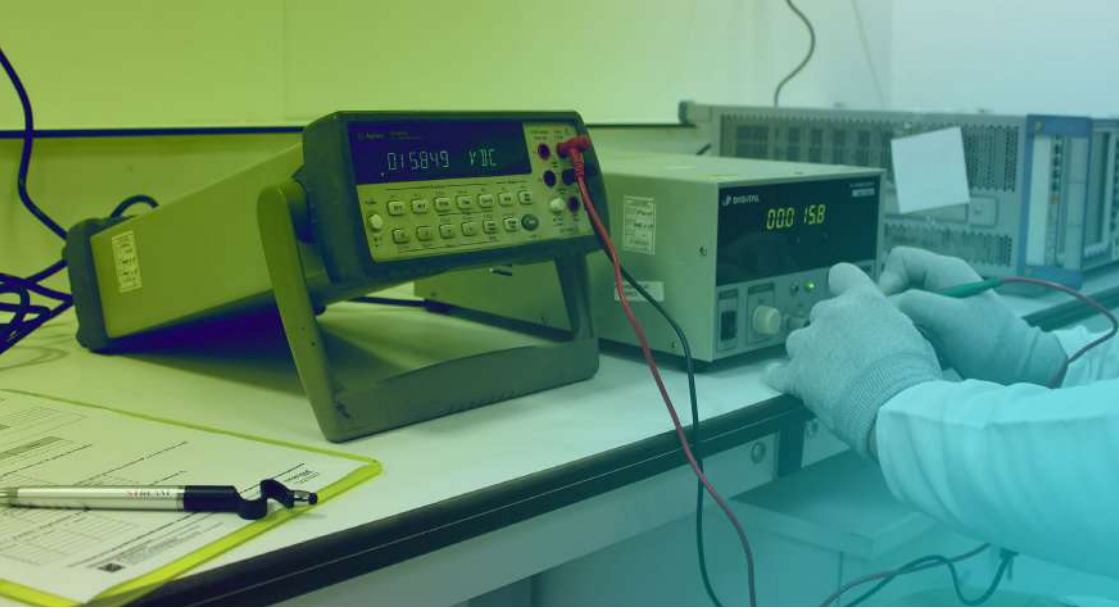
BOMARE COMPANY has a solid experience, proven expertise, and continuously evolving skills, in line with innovations in the field of metrology and the calibration of industrial equipment.



BOMARE COMPANY established its Calibration Laboratory in 2021. Accredited by the Algerian Accreditation Body, ALGERAC, in accordance with ISO/IEC17025:2017 and ALGERAC's application rules, the laboratory operates in the Dimensional field.

Following the guidance of international experts, the laboratory has also successfully obtained accreditation in the field of electricity.





**Dimensional**



**Electrical**



**Weighing**



**Force**



**Temperature**

- **Dimensional:** Calipers, micrometers, depth gauges, comparators, and laser rangefinders.
- **Electrical:** Calibrators, megohmmeters, multimeters, voltage generators, frequency generators, signal generators, ammeter clamps, oscilloscopes, and resistors.
- **Weighting:** Industrial scales.
- **Force:** Force sensors.
- **Temperature:** Thermometer, temperature recorder, temperature probes, thermocouples.

**Our standards are traceable to international reference standards.**

**Standardized procedures**

**Efficient quality system**

**Qualified personnel**



BOMARE COMPANY created a new subsidiary company named "Bomare Solutions Entreprises" (Bomare for business Solutions) to offer efficient and innovative professional solutions.

Its fields of activity are :

- Digital signage displays.
- Development of interactive content and monitoring solutions.
- Industrial subcontracting on demand.
- CCTV solutions.
- Smart solutions, such as facial recognition for access control and e-payment.
- Smart connected objects using IoT technology.



## CUSTOMER CARE SERVICE

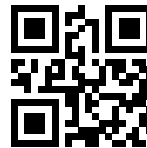
BOMARE COMPANY has its own Customer Care Service to assist customers. For any inquiries, customers may simply leave a message on the STREAM Facebook page or call the following number:



Stream system - Bomare company



Customer service +213 560 01 28 41





## BOMARE COMPANY'S PARTNERS

BOMARE COMPANY's strict compliance with international production standards and certifications, including CE and RoHS, caught the attention of LG ELECTRONICS. Following a 2012 visit that highlighted BOMARE COMPANY's professionalism and expertise, the South Korean giant conducted several audits before officially entering into a partnership.

1. Technological Training : BOMARE COMPANY engineers received training in South Korea with full support from LGE.

2. Production Process Control : The partnership enabled BOMARE to double its production capacity and optimize costs.

3. Quality Control : Integrating LGE's international standards enhanced BOMARE's quality assurance processes.

4. Export : In partnership with LGE, BOMARE began exporting LG products made in Algeria to Europe, with the first shipment to Spain in September 2020.



BOMARE Company announced the mutual end of its 12-year strategic partnership with LG Electronics for TV manufacturing, citing divergent strategic orientations. BOMARE is now moving forward with a new growth phase focused on industrial expansion and strengthening its global presence.



## HISTORICAL OVERVIEW

- 2001 ● Creation of BOMARE COMPANY by Mr. Ali Boumediene
- 2002 ● Launch of manual insertion of power supply boards.
- 2006 ● Installation of an SMT Line.
- 2007 ● Launch of the 5-year warranty, including the panel, for TVs.  
● First export of CRT TVs to the European market.
- 2011 ● Obtaining the ISO 9001 : 2008 certification.
- 2012 ● Inauguration of a high-tech LCD Repair Center (CMD unit) to repair all kinds of TV screens (LCD, LED, DLED and OLED) contained in an ISO 5 Clean Room.
- 2013 ● Signature of a partnership agreement with LG Electronics for televisions manufacturing.  
● Installation of a second SMT Line.
- 2014 ● Signature of a partnership agreement for technology transfer with KTC.
- 2015 ● Installation of a smartphone production unit housed in an ISO 6 clean room.  
● Signature of a partnership agreement with HISENSE.  
● BOMARE COMPANY became the first Algerian company to request the creation of the business code for smartphone manufacturing.
- 2016 ● Obtaining the Export Trophy Encouragement Award for the best exporter of electronic products in 2015.  
● Signature of an agreement to export televisions and smartphones to the European market, including Spain and Portugal.  
● Inauguration of two after-sales service in Spain and Portugal.



2017

- Signature of a USD 1.5 million agreement with the American “UNIVERSAL INSTRUMENTS” to equip “Saad Dahlab” university of Blida with an SMT production line.
- Obtaining BASSMA DJAZAIRIA label for TVs, Smartphones and Tablets.
- Installation of an SMT Line in “Saad Dahlab” university of Blida.
- Signature of a partnership agreement with LG Electronics for Smartphone manufacturing.
- Installation of a new high-volume SMT Line equipped with Line manager and full traceability modules
- Obtaining approval from the Ministry of the Interior for manufacturing, marketing and maintenance of IP cameras.

2018

- Implementation of the SAP Business One ERP system.
- Agreement to export of LG Smartphones manufactured by BOMARE COMPANY to the Maghreb region.
- Signature of an agreement with the Japanese «NEC» to integrate new biometric authentication software, using facial recognition algorithms to BOMARE COMPANY's Smartphones.
- Successful transition to the ISO 9001 : 2015.

2019

- Signature of an export agreement to begin exporting STREAM products to Italy.
- The London Stock Exchange Group (LSEG) ranks BOMARE COMPANY as an inspiring and fast-growing company in the African market for 2018.
- Signature of a partnership agreement with KaiOS Technologies.
- Installation of a 3rd TV assembly line.



2020

- The London Stock Exchange Group (LSEG) ranked BOMARE COMPANY among the best-performing African companies in 2019.
- Launch of «ARENA» platform on STREAM Smart TVs to allow users to optimize the use of their Smart TVs benefit from many web services under official licenses.
- Signature of an agreement with Google for the Android TV license.
- Creation of a new subsidiary company named “Bomare Solutions Entreprises” (Bomare for business Solutions).
- Signature of a partnership agreement with LG Electronics for the export of LG products, manufactured in Algeria by BOMARE COMPANY, to the European market.
- BOMARE COMPANY was awarded the Best Exporter Trophy 2019 by WTC Algeria.

2021

- BOMARE COMPANY launched its own calibration laboratory.
- «Best Algerian Entrepreneur Trophy 2021» Mr. Ali BOUMEDIENE elected Best Algerian Entrepreneur by European CEO Magazine.
- BOMARE COMPANY launched, in partnership with Saad Dahlab University of Blida, a professional Master’s degree for the 2021–2022 academic year entitled “Applied Automatic Professional Master,” affiliated with the new Department of Automatic and Electrical Engineering.

2022

- Signature of a partnership agreement with LG Electronics for the license of a new version of WebOS Hub.
- Signature of an agreement with Google LLC for the Google TV license.
- Launch of a new TV range featuring Mini LED technology.
- Obtaining the “Ikhtiyari” label for STREAM’s WebOS range.



2023

- Obtaining ALGERAC accreditation according to ISO/IEC 17025 standard for Dimensional activities of the metrology laboratory.
- Launch of SARL BOMARE TECHNOLOGY CORPORATION.

2024

- Launch of the new industrial site for the manufacturing of electronic products.
- Signature of an agreement between STREAM and HBCEB.
- Inauguration of the Gaming Zone at Houari Boumediene Airport.
- Launch of Android 14.
- Opening of a new STREAM Franchise Showroom.
- Participation in the ICT Job Fair 2024 by Huawei in Algiers.
- Signature of a major scientific agreement with the National School of Artificial Intelligence (ENSIA).

2025

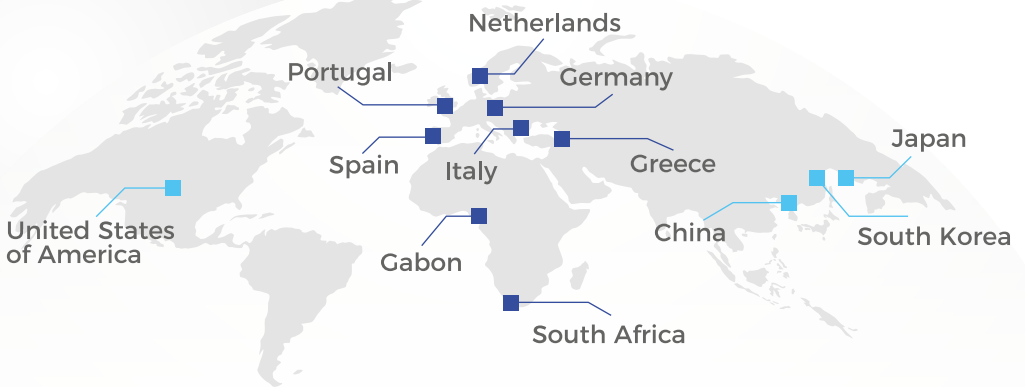
- Launch of new STREAM IT products.
- Launch of the Sound Pro TV series.
- Opening of a new Showroom in Sidi Yahia, Algiers.
- Creation of a new visual identity of BOMARE COMPANY.
- Inauguration of the new Headquarters of BOMARE COMPANY.

2026

- Launch of the NEW ERA RG mini led.
- Opening of a new manufacturing facility with expanded capacity in Blida.
- BOMARE was awarded the Fi Khidmatikoum label by iANOR in recognition of its excellence in customer relations.



# Design *The Future*



 Partnership  Exportation



**Head office :** 08 Ben Aknoun Road, El Biar - Algiers.

**Email :** sarlbomare@streamsystem.net

**Phone / Fax :** +213 (0) 28 05 36 39

**[www.bomarecompany.com](http://www.bomarecompany.com) / [www.streamsystem.com](http://www.streamsystem.com)**